

IBARAKI UNIVERSITY

PROGRAM FOR
ACADEMIC EXCHANGE

ABOUT IBARAKI UNIVERSITY

Welcome to Ibaraki University!

Ibaraki University is a national university that was established in 1949.

The university has five colleges, five graduate programs, and one diploma program on three campuses (Mito, Hitachi, and Ami). The three campuses are all located in Ibaraki Prefecture, which forms part of the National Capital Region. There are approximately 7,000 undergraduate students and 1,100 graduate students, including 300 international students.

Mito Campus

Institute for Liberal Arts Education
College of Humanities and Social Sciences
College of Education
College of Science
Graduate School of Humanities and Social Sciences
Graduate School of Education
Graduate School of Science and Engineering (Mito)
Advanced Course for Education of the Disabled

Hitachi Campus

College of Engineering
Graduate School of Science and Engineering (Hitachi)

Ami Campus

College of Agriculture
Graduate School of Agriculture
United Graduate School of Agricultural Science



WHERE IS IBARAKI UNIVERSITY



OVERVIEW OF IBARAKI EXCHANGE PROGRAM

01 General Information

Ibaraki University has student exchange agreements with numerous partner universities around the world. The exchange program is specifically tailored for international students who wish to study at Ibaraki University for one semester or a full year.

Details of the students exchange agreements

Tuition Fees	Admission fee and tuition fee are waved. Students must pay tuition to their home institution.
Term	1. First Semester: April-August 2. Second Semester: Late September-February 3. One year (Students can start in either semester.)
Japanese Language Requirement	1. Japanese Language and Culture Program: All Japanese levels (including beginners) 2. General Exchange Program: At least JLPT N2 Level 3. AIMS Program: All Japanese levels (including beginners) See details for each program
Housing	University Dormitory (See page ##for more information)

02 Academic calendar

Apr	May	Jun	Jul	Aug	Sep	Oct	Nov	Dec	Jan	Feb	Mar				
First Semester						Second Semester									
	Semester Courses				Exam	Summer vacation	Semester Courses			Winter vacation	Exam	Spring vacation			
	1st Quarter		Exam	2nd Quarter			3rd Quarter		Exam				4th Quarter		

03 List of exchange programs

Ibaraki University offers the following programs for exchange students.

Program I Japanese Language and Culture Program	
Location	Mito Campus
Language Requirement	All Japanese levels (including beginners) Students who wish to attend a beginner's courses must have English communication skills.
Outline	This program provides students with an opportunity to learn and to improve their Japanese language skills and to deepen their understanding of Japanese culture and society. Students take Japanese language classes, and classes related to Japan that are taught in English. Intermediate-advanced students may also take college classes taught in Japanese. A wide range of cultural and educational activities are also provided throughout the semester.
Program II General Exchange Program	
Location	Mito Campus (College of Humanities and Social Sciences, Science, Education) Hitachi Campus (College of Engineering) Ami Campus (College of Agriculture)
Language Requirement	Students must have JLPT N2 level (undergraduate)
Outline	Students are enrolled in one of the colleges or graduate schools at Ibaraki University. Almost all undergraduate classes are conducted in Japanese, thus a high proficiency in the Japanese language will be required. Students who seek to enroll at the graduate level can, upon obtaining the approval of their academic advisor, commence their research studies in English.
Program III AIMS Program	
Location	Ami Campus (College of Agriculture)
Term	September-December
Language Requirement	No knowledge of Japanese language required. For more information: http://ddp.agr.ibaraki.ac.jp/aims.html

JAPANESE LANGUAGE AND CULTURE PROGRAM

01 Japanese language classes

Ibaraki University offers Japanese language classes for all levels (Level 1 through Level 5), ensuring that each student will find themselves in the right learning environment (exchange students will take a placement test upon their arrival).

The following are the Japanese language classes offered. Each class is 90 minutes.

Japanese Level	Target	Classes(number of classes per week)
Level 1	For complete beginners	General Japanese Level 1 (6 classes)
Level 2	Pre-intermediate students who have studied Japanese for one year or more. Equivalent to the N5~N4 level of the Japanese Language Proficiency Test (JLPT).	General Japanese Level 2 (4 classes) Reading and Writing Level 2 (2 classes)
Level 3	Intermediate students who have studied Japanese for two years or more. Equivalent to the JLPT N4~N3 level.	General Japanese Level 3 A/B (4 classes) Oral Expressions Level 3 A/B (1 class) Intermediate Kanji A/B(1 class) Extensive Reading in Japanese A/B (1 class)
Level 4	Intermediate students who have studied Japanese for two years or more. Equivalent to the JLPT N3~N2 level.	General Japanese Level 4 A/B (2 classes) Oral Expressions A/B (1 class) Advanced Kanji A/B (1 class) Japanese Culture and Society A/B (1 class) Extensive Reading in Japanese A/B (1 class)
Level 5	Intermediate-advanced students Equivalent to the JLPT N2~N1 level.	General Japanese Level 5 A/B 2 classes) Japanese Culture and Society A/B (1 class) Academic Japanese I(1 class)* Academic Japanese II A/B/C (1 class)*

*classes are offered as regular university courses.



02 Japan-related classes in English

Several courses, particularly related to Japanese culture and society, are conducted in English. Some of the courses can be seen below.

Japanese Pop Culture A/B

Studies in Contemporary Japan

Studies in Particular Field

Geography of Japan

Analyzing Social Issues A/B

Media Effects A/B

Japanese Film History

Media and Politics in Japan A/B

Media and Democratic Citizenship

Diversity and Social Issues in Japan A/B

Note: Some of the above courses may not be offered in a given semester or academic year.

03 Model timetable [a student at a pre-intermediate level]

	MON	TUE	WED	THU	FRI
1st period 8:40-10:10					
2nd period 10:20-11:50	General Japanese Level 2	General Japanese Level 2	General Japanese Level 2		General Japanese Level 2
3rd period 12:40-14:10	Japanese Literature		Japanese Field Studies	Reading and Writing Level 2	
4th period 14:20-15:50	Reading and Writing Level 2		Japanese Film history		Japanese Pop Culture
5th period 16:00-17:30					

Japanese language classes

Content classes with Japanese students (instruction is in English)

Fieldwork learning class for exchange students



CAMPUS LIFE

1 Activities

The University organizes various activities to promote cultural exchange between international and Japanese students.

International Camp



Flower Arrangement



Tea Ceremony



Field Trip



2 Student organizations and extracurricular activities

One way to make Japanese friends is to join a club or circle (i.e. society) of your interest. In general, clubs are stricter than circles and require members to attend regularly. There are more than 200 clubs/circles at Ibaraki University, ranging from Japanese cultural circles to sports clubs. We strongly recommend international students to participate in some form of extracurricular activity during their stay at Ibaraki University.

Sport

aikido, soccer,
basketball, canoeing,
skiing, tennis,
American football,
karate, kendo,
judo, volley ball,
and more...

Culture and Study

tea ceremony,
photo club, manga,
volunteer, chess,
English Study Society,
science fiction club,
theater, automobile club,
and more...

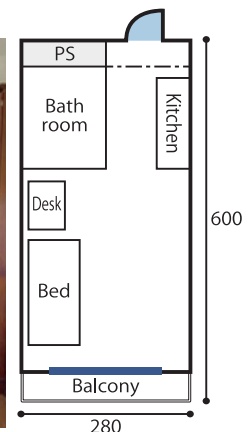
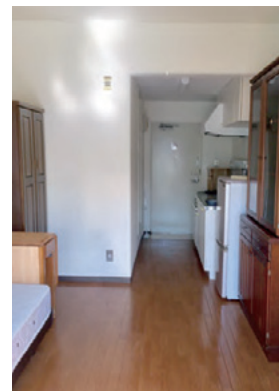
Music

jazz, brass band,
rock, piano,
orchestra,
folklore music,
chore,
and more...

3 Housing

A housing facility (the International House) is provided for students and researchers who arrive at Ibaraki University.

Campus	Room Types	Number of Rooms	Monthly Rent and Common Service Fee
Mito	Single (bldg. A,B)	38	Rent: 5,900 yen Common service fee: 1,000 yen
	Single (bldg. D-I)	35	Rent: 20,400 yen Common service fee: 1,000 yen
Hitachi	Single	11	Rent: 5,900 yen Common service fee: 1,200 yen
Ami	Single (bldg. A,B)	20	Rent: 12,000 yen No common service fee



4 Part-Time Jobs

Exchange students can work part time for up to 28 hours per week with the permission from the Immigration Office. However, if you wish to find a part-time job, be sure to consult your faculty advisor first, and manage your working hours so that it does not disrupt your studies. We encourage you to start working only after getting used to your study load and the cultural norms of Japanese society.

STUDENT SUPPORT

01 Multiple tutor system

You can have an individual student tutor. Your tutor is typically a Japanese student from your home department who will help you with daily life. In addition, you will most likely be in touch with other student tutors as well (dorm tutors, lounge tutors, etc.) who will assist you when you need help at specific locations.



02 Counseling

Each student is assigned a faculty advisor based on the student's field of study and interests. Additionally, the Center for Global Education can also offer advice and counseling service for international students that experience academic and/or personal issues.

03 University Health Center

The University Health Center is a facility where doctors, counselors, and nurses, provide a variety of health services (e.g. first-aid treatment) to students to ensure their physical and mental well-being.

04 Health insurance

National Health Insurance

Exchange students are required to subscribe to the National Health Insurance. Necessary procedures for registration can be completed upon the student's arrival. The insurance premium is paid monthly once the registration is completed.

Students Accident Insurance

In addition to the National Health Insurance program, exchange students are required to join the Personal Accident Insurance for Students Pursuing Education and Research plan. This insurance covers unexpected accidents and injuries that students may unfortunately experience during the course of their stay at Ibaraki University.

WHAT TO DO IN IBARAKI

- 1 Izura Coast(Kitaibaraki)
- 2 Hitachi Seaside Park (Hitachinaka)
-Kochia
- 3 Hitachi Seaside Park (Hitachinaka)
- Baby blue eyes
- 4 Oaraki Isosaki Shrine (Oarai)
- 5 Mt. Tsukuba (Tsukuba)
- 6 Ushiku Daibutsu (Ushiku)
- 7 Kashima Shrine (Kashima)



HOW TO APPLY

If you are studying at one of Ibaraki University's partner universities, you can contact the office of international studies (or its equivalent) at your home institution. They will guide you through the necessary procedures to apply to Ibaraki University as an exchange student.

Your application must be submitted through the office of international studies at your home institution. Ibaraki University does not accept applications from individual students.

Please confirm the dates with the office of international studies (or its equivalent) at your home institution.



I decided to choose Ibaraki University because of the school's reputation for being a safe and fun exciting place to study. I believe that there is truly something special about Ibaraki prefecture and especially Ibaraki University. Upon arriving here six months prior till now, I have come to realize that I really enjoy Ibaraki University and the atmosphere created by the students and teachers that attend the university. Ibaraki for me feels like home, and I feel that Mito and the surrounding areas provide exchange students excellent opportunities to experience life in Japan. I will never forget the memories and experiences I have created here at Ibaraki University.

-Benjamin Self (U.S.A.)

CONTACT

Address : Center for Global Education, Ibaraki University,
2-1-1 Bunkyo Mito-shi Ibaraki-ken 〒310-8512 JAPAN
TEL : +81-29-228-8056 FAX : +81-29-228-8594
E-mail : ryusodan@ml.ibaraki.ac.jp
Website : <http://cge.lae.ibaraki.ac.jp>
Facebook : <https://www.facebook.com/ibadai.cge>
YouTube : <https://www.youtube.com/user/ibaryusen>